

Pelletiser CIP-5 & Containers



CIP 5 Pelletiser, efficient dry ice production

The CIP 5 pelletiser offers a versatile and economical solution for producing up to 320kg/h high density dry ice. The CIP 5 can be delivered with different extrusion dies. It can produce:

- 2 and 3 mm dry ice pellets for dry ice cleaning
- 10 and 16 mm dry ice sticks for cooling and other applications.

Switching from pellets/sticks can be done in a few minutes.

The CIP 5 is a hydraulic pelletiser with a silent motor. It has interesting features such as an ergonomic touch screen control panel, logging of production parameters, hour counter, displayed machine status, warnings, alarms, buzzer,...

The machine also has inputs for a CO₂ detector.

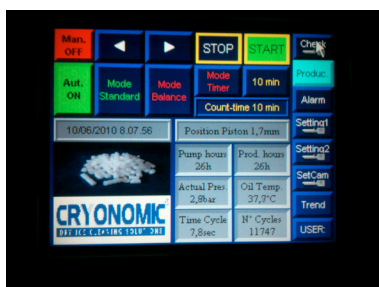
Dry ice containers, flexible dry ice storage

For long term storage, we offer 4 containers:

- The CIC 500 ², CIC 300, CIC 150 and CIC 85 containers are well isolated though light weight with contents of 500, 300, 150 and 85 litre.

For short term storage, we offer 2 solutions:

- The CIC 15 and CIC 30 are portable polystyrene boxes.



Touch screen control panel

Applications of dry ice pellets:

Dry ice cleaning, cooled transport, catering industry, transport of medical goods, declamping of metal parts, smoke generation, carbonic maceration, process cooling, pest control cloud making, ...

Discover more details on the reverse side!



dry ice pellets

dry ice sticks



The Cool Way
Of Cleaning

CRY ONOMIC
DRY ICE CLEANING SOLUTIONS

PELLETISERS & CONTAINERS

CIP 5 Pelletiser

Production capacity ⁽¹⁾	
3 mm pellets	up to 320 kg/h of high density dry ice pellets
Other pellet diameters	2mm, 10 mm, 16 mm
Dimensions (L x W x H)	1.600 x 830 x 1.700 mm
Weight (incl. hydraulic oil)	800 kg
Power consumption	8,2 kW
Power supply	400V/50Hz/3Ph+E
Supply liquid CO2 ⁽²⁾	Liquid CO2 moisture content: 65 ppm and completely oil free
pressure	16 - 21 bar
inlet connection liquid CO2	3/4" BSP
outlet gas CO2	2" BSP
Pellet outlet height	approx. 1250 mm

⁽¹⁾ The production capacity depends on pellet diameter, gas tank pressure and status, liquid CO2 temperature, atmospheric conditions, user settings.

Containers

Technical information

	CIC 500	CIC 300	CIC 150
Outer dimensions (L x W x H)	1.200 mm x 1.000 mm x 940 mm	1.000 mm x 800 mm x 940 mm	800 mm x 600 mm x 940 mm
Inner dimensions (L x W x H)	1.010 mm x 810 mm x 610 mm	810 mm x 610 mm x 610 mm	605 mm x 405 mm x 600 mm
Storage capacity	500 litre	300 litre	150 litre
Empty weight	100 kg	80 kg	55 kg
Storage capacity for 3 mm pellets	± 420 kg	± 250 kg	± 125 kg
Wall thickness / isolation material	85 mm polyurethane	85 mm polyurethane	85 mm polyurethane
Pallet or wheels	pallet	pallet or wheels	pallet or wheels

	CIC 85	CIC 30	CIC 15
Outer dimensions (L x W x H)	800 mm x 480 mm x 550 mm	375 mm x 375 mm x 375 mm	375 mm x 375 mm x 240 mm
Inner dimensions (L x W x H)	610 mm x 340 mm x 410 mm	300 mm x 300 mm x 300 mm	300 mm x 300 mm x 180 mm
Storage capacity	85 litre	27 litre	15 litre
Empty weight	18,5 kg	0,4 kg	0,4 kg
Storage capacity for 3 mm pellets	70 kg	22 kg	12,5 kg
Wall thickness / isolation material	70 mm polyurethane	35 mm polystyrene	35 mm polystyrene
Pallet or wheels	wheels on separate trolley		



CIC 500



CIC 300



CIC 150



CIC 85



CIC 30



CIC 15

We reserve the right to modify all or part of the above specifications without prior notice.

CRYONOMIC® has a worldwide network.
Contact your dealer for any information:

Printed in Belgium- CRY-CIP5-EN-1011

CRYONOMIC®
DRY ICE CLEANING SOLUTIONS

CRYONOMIC
Kleimoer 3 - B-9030 Gent - Belgium
Tel: +32 9 216 76 90 - Fax: +32 9 216 76 91
info@cryonomic.com
www.cryonomic.com

CRYONOMIC® is a registered trademark of ARTIMPEX N.V.